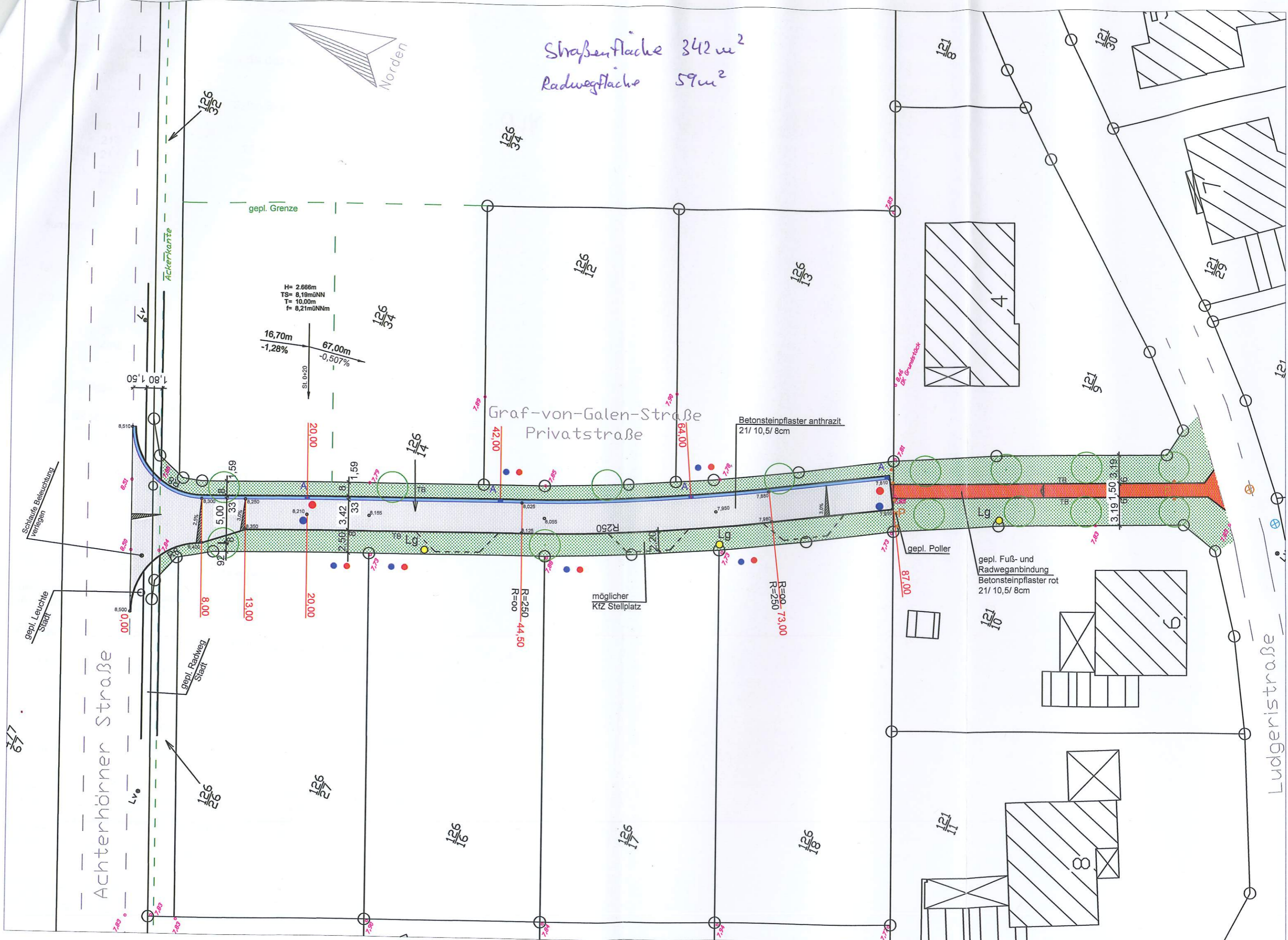
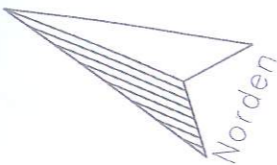


Straßenfläche 342 m²
Radwegfläche 59 m²



Achterhörner Straße

Graf-von-Galen-Straße
Privatstraße

Ludgerstraße

H= 2,666m
TS= 8,19müNN
T= 10,00m
f= 8,21müNNm

16,70m
-1,28%
67,00m
-0,507%

Betonsteinpflaster anthrazit
21/ 10,5/ 8cm

gepl. Fuß- und
Radweganbindung
Betonsteinpflaster rot
21/ 10,5/ 8cm

R=250 44,50
R=00

R=00 73,00
R=250

möglicher
Kfz Stellplatz

gepl. Poller

Schlaufenbeleuchtung
verlegen

gepl. Leuchte
Stadt

gepl. Radweg
Stadt

gepl. Radweg
Stadt

Ackerkarte

gepl. Grenze

gepl. Grundstück

179

1,80
1,50

8,50
0,00

8,00

13,00

20,00

9/21

9/21

9/21

9/21

9/21

9/21

126
3/4

126
3/4

126
3/4

126
3/4

121
3/8

121
3/8

121
3/8

121
3/8

121
3/8

121
3/8

121
3/8

121
3/8

121
3/8

121
3/8

7,83

7,83

7,83

7,83

7,83

7,83

7,83

7,83

8,5104

8,51

8,50

8,50

8,50

8,50

8,50

8,50

8,50

8,50

8,50

8,50

8,50

8,50

8,300

8,250

8,350

8,210

8,150

8,020

7,950

7,880

7,810

7,740

7,670

7,600

7,530

8,300

8,250

8,350

8,210

8,150

8,020

7,950

7,880

7,810

7,740

7,670

7,600

7,530

8,300

8,250

8,350

8,210

8,150

8,020

7,950

7,880

7,810

7,740

7,670

7,600

7,530

8,300

8,250

8,350

8,210

8,150

8,020

7,950

7,880

7,810

7,740

7,670

7,600

7,530

8,300

8,250

8,350

8,210

8,150

8,020

7,950

7,880

7,810

7,740

7,670

7,600

7,530

8,300

8,250

8,350

8,210

8,150

8,020

7,950

7,880

7,810

7,740

7,670

7,600

7,530

8,300

8,250

8,350

8,210

8,150

8,020

7,950

7,880

7,810

7,740

7,670

7,600

7,530

8,300

8,250

8,350

8,210

8,150

8,020

7,950

7,880

7,810

7,740

7,670

7,600

7,530

8,300

8,250

8,350

8,210

8,150

8,020

7,950

7,880

7,810

7,740

7,670

7,600

7,530

8,300

8,250

8,350

8,210

8,150

8,020

7,950

7,880

7,810

7,740

7,670

7,600

7,530

8,300

8,250

8,350

8,210

8,150

8,020

7,950

7,880

7,810

7,740

7,670

7,600

7,530

8,300

8,250

8,350

8,210

8,150

8,020

7,950

7,880

7,810

7,740

7,670

7,600

7,530

8,300

8,250

8,350

8,210

8,150

8,020

7,950

7,880

7,810

7,740

7,670

7,600

7,530

8,300

8,250

8,350

8,210

8,150

8,020

7,950

7,880

7,810

7,740

7,670

7,600

7,530

8,300

8,250

8,350

8,210

8,150

8,020

7,950

7,880

7,810

7,740

7,670

7,600

7,530

8,300

8,250

8,350

8,210

8,150

8,020

7,950

7,880

7,810

7,740

7,670

7,600

7,530

8,300

8,250

8,350

8,210

8,150

8,020

7,950

7,880

7,810

7,740

7,670

7,600

7,530

8,300

8,250

8,350

8,210

8,150

8,020

7,950

7,880

7,810

7,740

7,670

7,600

7,530

8,300

8,250

8,350

8,210

8,150

8,020

7,950

7,880

7,810

7,740